

# SKIRTEC

## INSTALLATION INSTRUCTIONS C15035 & C15050 SKIRTING DUCT

### BASE

All base **MUST** be fitted level. Use of a chalk line is recommended.

All base **MUST** have a minimum clearance above the finished floor surface of 2mm. **DO NOT SIT DUCT AGAINST FLOOR.**

Any curvature in walls that will induce bowing in the installed base of greater than 1mm/metre **MUST** be corrected either prior to fitment (by others) or by appropriate packing (by installers). If excessive gapping exists behind fitted base, filling/finishing should be completed prior to cover fitment.

**Fastener** spacing **MUST** not exceed 450mm and duct must be fastened in both Top & Bottom channels.

**Earth/Alignment dowels** (provided) should be fitted (crimped) at every join between base sections.

Mitre cutting of base is recommended at corners, however, internal corners may be overlapped.



FIG 1

### OUTLETS

Mount internal block(s) with screws provided as per fig 1.

Drill cables feed holes, use 19-20mm hole saw.

Fit snap grommets provided

At this point outlets can be wired and installed complete with duct cover plate.

Fix outlet to internal block by use of screws provided with the kit.

NOTE: when using double and triple kits the internal mounting blocks simply butt together.



## COVERS

Locate the bottom slot of the cover over the bottom rail of the base.

Apply downward and forward pressure onto the cover to ensure the cover bead clicks UNDER the base location bead.

Snap the top edge of the cover into place.

TIP\*\*\* Anodised aluminium tends to bind! Should you find the cover section difficult to fit or remove, simply apply a lubricant such as soap, wax or silicone spray to the centre beading of the base or cover. Avoid using oils, but if used, do not over apply.

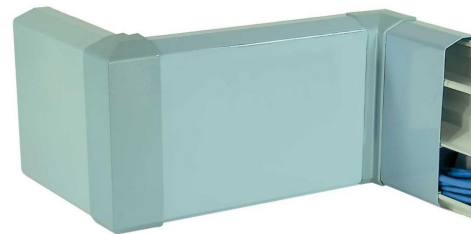
Corners are accomplished by use of modular corners, see figs below. It is recommended that the small screw provided is used, as in figure 4, to ensure external corners cannot be dislodged in high traffic areas.

Note: *Spray and Wipe* or similar cleaners should be used to remove dirt or grime after installation is complete.

All duct must be installed to comply with AS3000. If you have any queries regarding fitment or compliance with standards, please call our helpline.

Certificate of suitability CS/848/Q.

Before comers with straight cuts



With comers



Cover bead under the base location bead.